

Indianapolis Symphonic Choir PERFORMANCE ATTIRE GUIDELINES

Members of the Indianapolis Symphonic Choir have earned the admiration of audiences and musical colleagues for their dedication to music making at the highest level. And while the music we make is always the most important aspect of our work together, our performance attire is a visual representation of who we are and what we do. Consequently, we strive for a look that befits the ensemble's commitment to excellence, while also reflecting the pride we take in our singing and ourselves, as well as being safe, comfortable, and practical.

The accompanying documentation describes the multiple attire options each member of the ISC can consider. *Any singer is free to choose the option they like the most, regardless of voice part or gender identity/expression.* (Those interested in the tuxedo option will see that our supplier offers them in men's and women's sizes, for example.) We know that our singers will sound their best when they feel comfortable in the outfits they wear.

We are honored that you have chosen to share your musical talents with the Indianapolis Symphonic Choir! And we want you to feel good about how you look on stage. If you have any questions about these attire guidelines, please don't hesitate to reach out to Attire Coordinator Christina Merriott, your section leader, or Production Manager Kara Stolle and we'll make sure to get you the information you need. Here's to a great show!

WHAT ARE PERFORMANCE ATTIRE OPTIONS?

Many items may be purchased through ISC, who places group orders and can take advantage of group discounts. Personal performance attire may also be purchased or attained from various sources.

- Any singer is free to choose the option they like the most, regardless of voice part or gender identity/expression.
- We recognize that certain costs accompany performance attire. ISC can support your participation. See below about to apply for performance attire financial support.
- **Option #1** Black concert dress outfit available through ISC vendor, in coordination with Attire Coordinator
- **Option #2** Black tuxedo (either available through vendor or purchased on your own; includes black bowtie/cummerbund, white tux shirt, black socks, black shoes)
- **Option #3** Personal Attire Option, to conform with guidelines listed below

KEY CONSIDERATIONS INCLUDE:

- Formal appearing attire, which is in keeping with ICS's commitment and brand of excellence.
- Attire that prevents distraction in style, tone, texture, length.
- Attire that allows for all to comfortably and safely fit and perform in a crowded formation.

ASSISTANCE/SPONSORSHIP

- The Indianapolis Symphonic Choir strives to make participation in the ensemble possible for all musically qualified persons, regardless of one's ability to pay for a music packet, folder, or concert attire purchased from the ISC vendor. If you would like assistance with any of these items please fill out the following anonymous form => [Music Packet Assistance](#).
- If you are willing to sponsor a music packet, folder, or attire, please fill out the following form => [Music Packet Sponsorship](#)

PERFORMANCE ATTIRE RESOURCES

AVAILABLE FOR PURCHASE THROUGH ISC's VENDOR (Southeastern Performance Apparel.)

- Tuxedo: (both men's and women's cuts), including black bow tie and black cummerbund
- Concert Black Dress: The concert black dress is available for purchase from the ISC vendor, yet is not required. Choices may vary.
- Festival of Carols Red Accents: scarf, bow tie and cummerbund.
- Pearl style necklace and earrings.
- Christiana Merriott, the ISC's Attire Coordinator, will help you get sized and place orders, typically in the Fall, at the beginning of the performance season.
- Payment will be made through Chorus Connection.

PERSONAL ATTIRE (Select from personal resources):

- Black, dress, closed-toed shoes that support lengthy stand time.
- Personal pearl style necklace and earrings should closely match those purchased through ISC (pearls only, avoid any "bling" elements that can catch light and distract.)
- Watch and wedding/engagement bands may be worn.
- Tuxedo, including black bow tie and black cummerbund, black sox, black shoes. (Accented with vendor purchased red accents for Festival of Carols.)
- Solid black, full-length or $\frac{3}{4}$ length sleeved top contributing to full coverage. This may include a jacket of various tailoring worn over a black blouse or top with a neckline near or at the collar bones: round, high, crew neck, for example. Please avoid off-the-shoulder, V-neck, cowl necklines.
- Muted and/or solid weave of fabric that has a formal sensibility to it, avoiding see-through lace and light sheer fabric. Overtly textured or tops/jackets such as brocade, and those with reflective elements, such as sequins, rhinestones, or mirrors, etc. should be avoided. Please avoid satiny, shiny, glossy fabrics, as well as velvet, velour and highly textured ones.
- Solid black dress slacks that reach the ankle or shoe, over black hosiery, black shoes. The slacks should prevent distraction in style, tone, texture and length. Leggings, casual, jeans, patterned, sheer slacks, or those with reflective elements, etc. should be avoided.
- Solid black, ankle length dress or skirt, with black hosiery, black shoes. The style, tone, texture, length and fullness should prevent distraction in style, tone, texture, and length. The dress or skirt fullness should allow for safety in movement and fit for nearby singers to perform comfortably in a crowded performance formation.

GENERAL PERFORMANCE CONSIDERTIONS

MASKS

To ensure safety of self and others, wearing a mask in rehearsals and performances is respected, on a personal choice basis, and /or following CDC guidelines. If choosing to wear a mask during performances, please wear solid black masks, with no embellishments, to avoid creating reflections or other distractions. Be sure to wear a fresh, clean mask for each concert, with consideration for changing it during intermission.

GENERAL APPEARANCE

- Hair: Styled back and out of your face during performances. Any hair accessories should match your hair color or black to blend with performance attire. (Refer to jewelry note on stage lights)

- Face: Make-up is optional. If used, select neutral tones that accent your natural beauty.

PERFUMES/COLOGNES/SCENTS

Scents can create adverse reactions in many people. So that we may all safely breathe and sing at our best, it is imperative to avoid perfumes, colognes, or scented after-shaves. Please use non-scented soaps, hand lotions and other personal care products prior to and during rehearsals and performances. This requirement demonstrates ISC's value of ensuring a safe and welcoming environment for all.

PERFORMANCE ATTIRE MAINTENANCE

Please gather your various elements of your performance well in advance of a concert. Consider organizing them so that they are all together for the season...an attire "kit."

- Try on your performance attire well before concert date, so that any needed adjustments may be made in a timely way. Consider trying on your attire at the beginning of each concert rehearsal sequence.
- How well are the attire elements fitting?
- Look carefully for any tears, scuffs, worn spots, etc. and make arrangements for repair.
- Check the hems...any loose stitching there (trip risk), or elsewhere?
- Buttons and buttonholes functioning well?
- Are elastic parts, suspenders working well? (Not too tight, not over stretched?)
- Pearls and earring parts working ok?
- Do you anticipate needing to purchase any attire-related items well in advance of a concert?

Please maintain freshness of all performance attire by washing and/or dry-cleaning it before and during performance cycles.

Ensure performance attire maintains crisp lines and is wrinkle free.

ADDITIONAL TIPS

- If you carry your phone with you, please be sure that it is turned completely off. Make sure it is in a secure location on your person and not at risk of ringing, lighting up, falling, sending out a weather/emergency warning or other distraction. Consider leaving it in a secured rehearsal space with other personal items while onstage.
- During performance week rehearsals, the final seating arrangement is set for both optimal choral sound and singer sight lines. Please consider the concert dress shoes you will wear for the performance and wear shoes of similar height during this time. This will help prevent performance day surprises for anyone who may be behind you.
- Please ensure your singer profile is current in Chorus Connection, especially the fields "formal name" (which will be used in printed concert programs) and "height" (in performance shoes, which will be used for singer placement within concert seating charts).
- The Performance Attire Coordinator will help with any questions and placing orders for singers.

Indianapolis Symphonic Choir Attire Examples

The featured examples follow ISC attire guidelines. Personal tops for wear with dress slacks or full length skirts. ISC Vendor purchases that will be coordinated through the Attire Coordinator. Personal jumpsuits. Most tops are available for \$20-35 from Amazon. These are examples only. You may have something similar or may choose to purchase elsewhere.



JC Penny



To wear under long sleeved black jacket.



Indianapolis Symphonic Choir Attire Examples



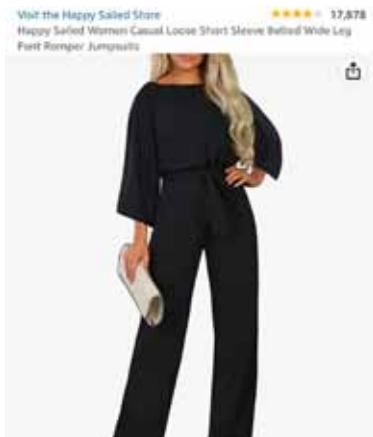
To wear under long sleeved black jacket.



To wear under long sleeved black jacket. ISC Vendor. Hanna \$61



ISC Vendor. Leider. \$74



ISC Vendor



ISC Vendor



ISC Vendor